

\$259,999 - 125 5816 Mullen Place, Edmonton

MLS® #E4431512

\$259,999

2 Bedroom, 2.00 Bathroom, 972 sqft

Condo / Townhouse on 0.00 Acres

MacTaggart, Edmonton, AB

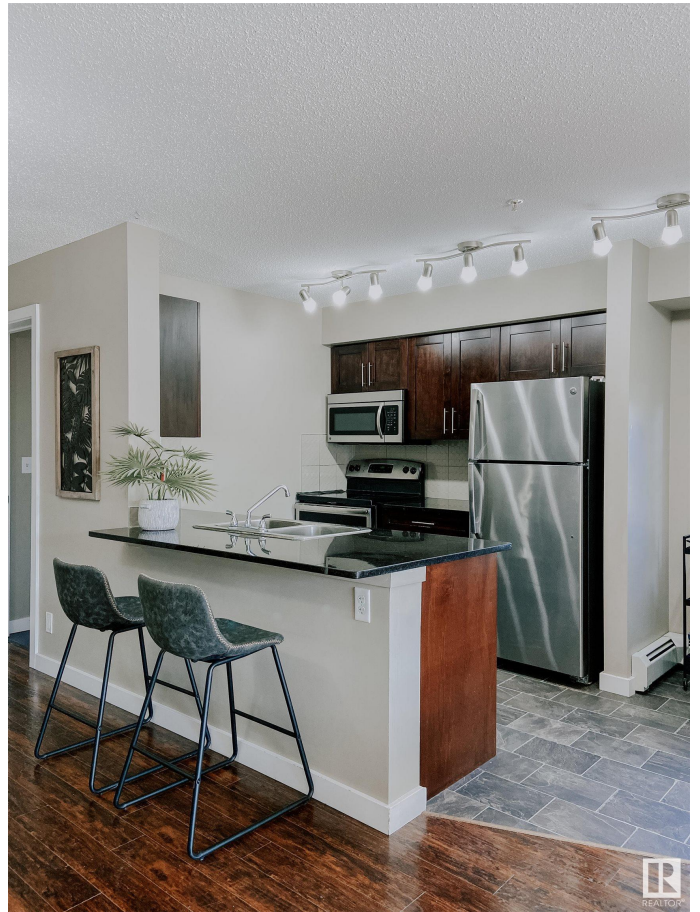
Rare Find! This spacious 2 bedroom + den and 2 full bathroom Condo in the sought after community of MacTaggart Ridge Gate comes with 2 titled parking spaces and Carrier air conditioning! Fresh finishes make this unit move in ready which combines style with functionality due to its open concept and good sized bedrooms. The kitchen and bathrooms are outfitted with quartz countertops. The master offers plenty of room, a walk through closet and its own private ensuite. The spacious second bedroom is well suited for the growing family. The in suite laundry room provides plenty of additional storage room for all your possessions. Location is key and this condo doesn't disappoint. Situated minutes from the Henday makes commuting a breeze. The strip malls around the corner add to your daily conveniences with a Freson Bros. grocery store, gas station, coffee shops and more! Nature lovers will surely appreciate the proximity to Whitemud Creek Ravine and Terwilliger Park. Enjoy all the benefits this condo offers!

Built in 2016

Essential Information

MLS® # E4431512

Price \$259,999



Bedrooms 2
 Bathrooms 2.00
 Full Baths 2
 Square Footage 972
 Acres 0.00
 Year Built 2016
 Type Condo / Townhouse
 Sub-Type Lowrise Apartment
 Style Single Level Apartment
 Status Active

Community Information

Address 125 5816 Mullen Place
 Area Edmonton
 Subdivision MacTaggart
 City Edmonton
 County ALBERTA
 Province AB
 Postal Code T6R 0W3

Amenities

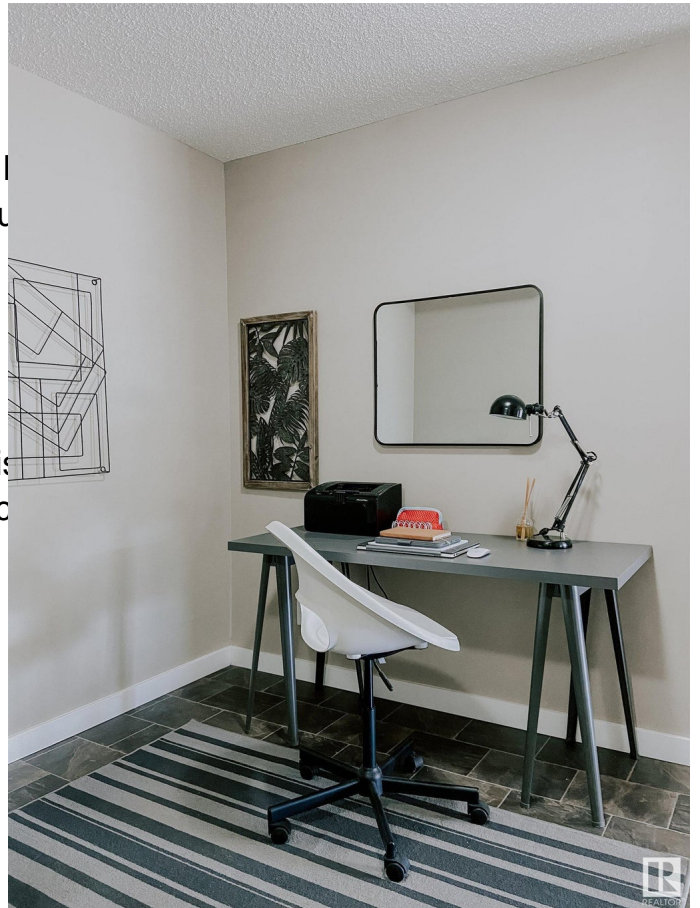
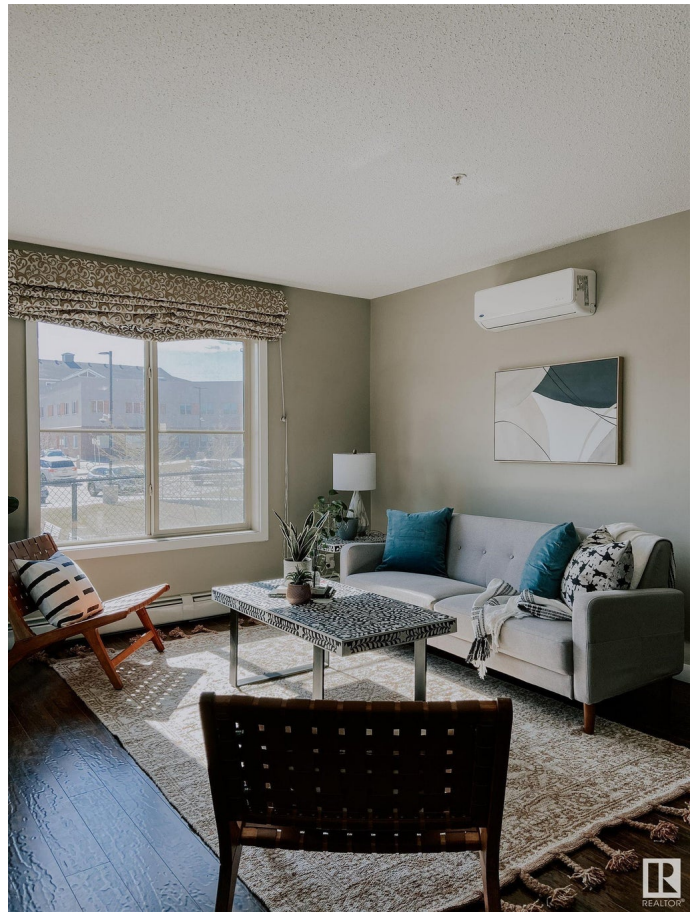
Amenities Air Conditioner, No Animal I
 Patio, Secured Parking, Secu
 Parking Stall, Underground

Interior

Interior Features ensuite bathroom
 Appliances Air Conditioning-Central, Dis
 Fan, Refrigerator, Stove-Elec
 Heating Baseboard, Water
 # of Stories 4
 Stories 1
 Has Basement Yes
 Basement None, No Basement

Exterior

Exterior Wood, Brick, Vinyl
 Exterior Features Landscaped, Schools, Shopping Nearby
 Roof Asphalt Shingles



Construction	Wood, Brick, Vinyl
Foundation	Concrete Perimeter

Additional Information

Date Listed	April 17th, 2025
Days on Market	2
Zoning	Zone 14
Condo Fee	\$459

DATA IS DEEMED RELIABLE BUT IS NOT GUARANTEED ACCURATE BY THE REALTORS® ASSOCIATION OF EDMONTON. COPYRIGHT 2025 BY THE REALTORS® ASSOCIATION OF EDMONTON. ALL RIGHTS RESERVED. Trademarks are owned or controlled by the Canadian Real Estate Association (CREA) and identify real estate professionals who are members of CREA (REALTOR®, REALTORS®) and/or the quality of services they provide (MLS®, Multiple Listing Service®)

Listing information last updated on April 19th, 2025 at 5:02pm MDT