

\$664,900 - 11 Lucinda Terrace, St. Albert

MLS® #E4431319

\$664,900

4 Bedroom, 3.50 Bathroom, 2,083 sqft

Single Family on 0.00 Acres

Lacombe Park, St. Albert, AB

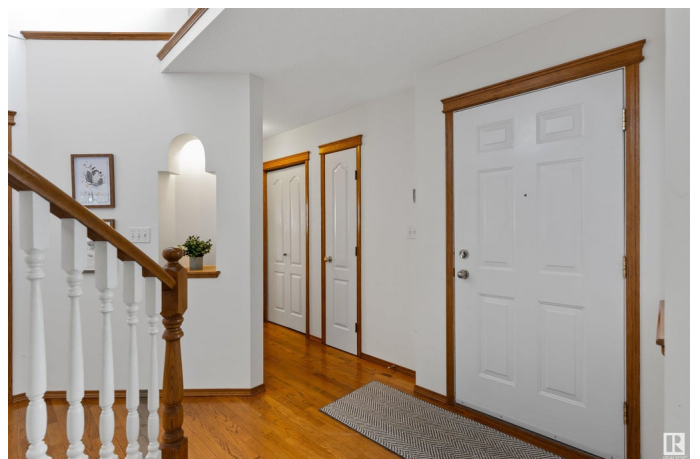
Discover this spacious, well cared for 2 storey home on a private cul de sac in Lacombe Park Estates. The entrance opens to a curved staircase & soaring 2 storey ceiling height. There is a formal living room & dining room. The kitchen is in the back of the home w/ refaced white cabinetry, island, corner pantry, tiled back splash & QUARTZ COUNTERS. The dining nook has access out to the private back yard w/ exposed aggregate patio. The family room has a GAS F/P & cork flooring. There is a laundry room & a half bath completing the main floor. The upper level has 3 generous sized bedrooms, a 4pce JACK & JILL BATH between 2 of the bedrooms & a 5pce en suite off the primary bedroom. The basement is FULLY FINISHED w/ a bedroom, rec room, 3pce bath, storage room & a mechanical room. This home has been well maintained including CENTRAL A/C (2015), furnace (2017), sump pump (2021) & shingles in the summer of 2024. A double attached oversized garage (22'9" x 21'10") completes this excellent home!

Built in 1998

Essential Information

MLS® # E4431319

Price \$664,900



Bedrooms	4
Bathrooms	3.50
Full Baths	3
Half Baths	1
Square Footage	2,083
Acres	0.00
Year Built	1998
Type	Single Family
Sub-Type	Detached Single Family
Style	2 Storey
Status	Active

Community Information

Address	11 Lucinda Terrace
Area	St. Albert
Subdivision	Lacombe Park
City	St. Albert
County	ALBERTA
Province	AB
Postal Code	T8N 6A6

Amenities

Amenities	Air Conditioner, Deck, Exterior Walls- 2"x6", See Remarks
Parking	Double Garage Attached, Over Sized

Interior

Interior Features	ensuite bathroom
Appliances	Air Conditioning-Central, Dishwasher-Built-In, Dryer, Freezer, Garage Control, Garage Opener, Hood Fan, Oven-Microwave, Refrigerator, Stove-Electric, Vacuum System Attachments, Vacuum Systems, Washer, Window Coverings
Heating	Forced Air-1, Natural Gas
Fireplace	Yes
Fireplaces	Mantel, Tile Surround
Stories	3
Has Basement	Yes
Basement	Full, Finished

Exterior

Exterior	Wood, Brick, Vinyl
Exterior Features	Cul-De-Sac, Fenced, Landscaped, Playground Nearby, Public Transportation, Schools, See Remarks
Roof	Asphalt Shingles
Construction	Wood, Brick, Vinyl
Foundation	Concrete Perimeter

Additional Information

Date Listed	April 17th, 2025
Days on Market	2
Zoning	Zone 24

DATA IS DEEMED RELIABLE BUT IS NOT GUARANTEED ACCURATE BY THE REALTORS® ASSOCIATION OF EDMONTON. COPYRIGHT 2025 BY THE REALTORS® ASSOCIATION OF EDMONTON. ALL RIGHTS RESERVED.Trademarks are owned or controlled by the Canadian Real Estate Association (CREA) and identify real estate professionals who are members of CREA (REALTOR®, REALTORS®) and/or the quality of services they provide (MLS®, Multiple Listing Service®)

Listing information last updated on April 19th, 2025 at 8:32am MDT