

# \$209,900 - 416 5521 7 Avenue, Edmonton

MLS® #E4430802

**\$209,900**

2 Bedroom, 2.00 Bathroom, 689 sqft  
Condo / Townhouse on 0.00 Acres

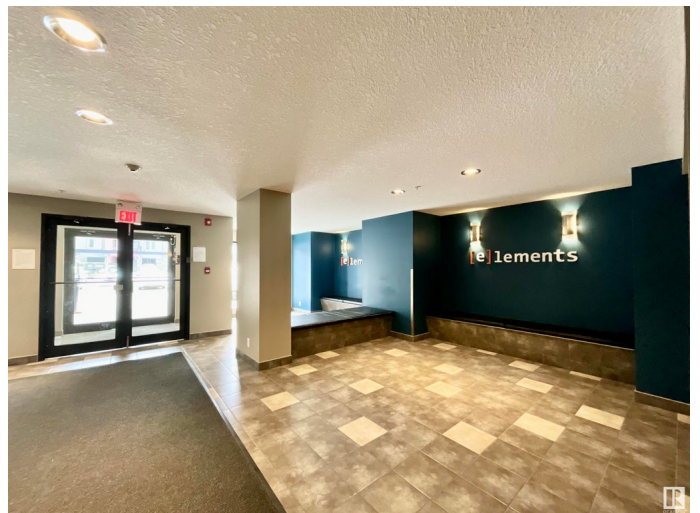
Charlesworth, Edmonton, AB

Attention all first-time home buyers or those looking for an investment! Perched on the TOP FLOOR of the Elements at Willowhaven, this immaculately maintained 2 bedroom, 2 bathroom condo offers sophisticated living in a prime location in the community of Charlesworth. The thoughtfully designed floor plan maximizes both space and natural light. The primary bedroom features a luxurious ENSUITE BATHROOM and walkthrough closet, creating the perfect retreat. A second bedroom and 3 piece bathroom provide ideal accommodations for guests or a home office. The bright, open-concept living area flows seamlessly to the kitchen, perfect for entertaining. Enjoy the convenience of IN-SUITE LAUNDRY and secure UNDERGROUND PARKING. UTILITIES INCLUDED IN CONDO FEE! Minutes from shopping, dining, and transit connections. This turn-key property combines location, luxury, and lifestyle. Your urban oasis awaits!

Built in 2014

## Essential Information

MLS® #	E4430802
Price	\$209,900
Bedrooms	2
Bathrooms	2.00



Full Baths	2
Square Footage	689
Acres	0.00
Year Built	2014
Type	Condo / Townhouse
Sub-Type	Lowrise Apartment
Style	Single Level Apartment
Status	Active

### **Community Information**

Address	416 5521 7 Avenue
Area	Edmonton
Subdivision	Charlesworth
City	Edmonton
County	ALBERTA
Province	AB
Postal Code	T6X 2A8

### **Amenities**

Amenities	Off Street Parking, Detectors Smoke, No Smoking Home, Parking-Visitor, Secured Parking
Parking Spaces	1
Parking	Heated, Underground

### **Interior**

Interior Features	ensuite bathroom
Appliances	Dishwasher-Built-In, Dryer, Microwave Hood Fan, Refrigerator, Stove-Electric, Washer, Window Coverings
Heating	Baseboard, Natural Gas
# of Stories	4
Stories	1
Has Basement	Yes
Basement	None, No Basement

### **Exterior**

Exterior	Wood, Stone, Vinyl
Exterior Features	Golf Nearby, Playground Nearby, Schools, Shopping Nearby
Roof	Asphalt Shingles
Construction	Wood, Stone, Vinyl

Foundation            Concrete Perimeter

### **Additional Information**

Date Listed            April 14th, 2025

Days on Market      5

Zoning                 Zone 53

Condo Fee             \$403

DATA IS DEEMED RELIABLE BUT IS NOT GUARANTEED ACCURATE BY THE REALTORS® ASSOCIATION OF EDMONTON. COPYRIGHT 2025 BY THE REALTORS® ASSOCIATION OF EDMONTON. ALL RIGHTS RESERVED. Trademarks are owned or controlled by the Canadian Real Estate Association (CREA) and identify real estate professionals who are members of CREA (REALTOR®, REALTORS®) and/or the quality of services they provide (MLS®, Multiple Listing Service®)

Listing information last updated on April 19th, 2025 at 4:47pm MDT