

\$354,800 - 19 5317 3 Avenue, Edmonton

MLS® #E4429820

\$354,800

3 Bedroom, 2.50 Bathroom, 1,323 sqft

Condo / Townhouse on 0.00 Acres

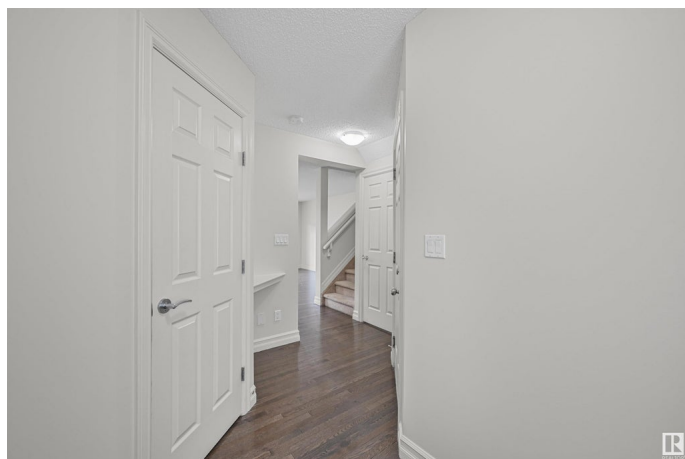
Charlesworth, Edmonton, AB

One look will do! Welcome home to this wonderful freshly painted half duplex. The open floor plan features a spacious main floor with hardwood floors. As soon as you enter you are greeted by a large entrance and a 2-piece main bath. The kitchen has a large island, plenty of cabinets, Black appliances and a corner pantry. The dining area features sliding doors to the deck and backyard. Bright and spacious living room has pot lights. Upstairs has 3 bedrooms with the primary bedroom that holds a king-size bed & a 3 piece ensuite, the other 2 bedrooms can hold queen beds, the 4 piece bathroom has lots of counter space and completing this floor is your laundry room. Located close to all amenities. A must to see!!

Built in 2013

Essential Information

| | |
|----------------|-----------|
| MLS® # | E4429820 |
| Price | \$354,800 |
| Bedrooms | 3 |
| Bathrooms | 2.50 |
| Full Baths | 2 |
| Half Baths | 1 |
| Square Footage | 1,323 |
| Acres | 0.00 |



| | |
|------------|-------------------|
| Year Built | 2013 |
| Type | Condo / Townhouse |
| Sub-Type | Half Duplex |
| Style | 2 Storey |
| Status | Active |

Community Information

| | |
|-------------|------------------|
| Address | 19 5317 3 Avenue |
| Area | Edmonton |
| Subdivision | Charlesworth |
| City | Edmonton |
| County | ALBERTA |
| Province | AB |
| Postal Code | T6X 0W7 |

Amenities

| | |
|-----------|------------------------|
| Amenities | Deck, Detectors Smoke |
| Parking | Single Garage Attached |

Interior

| | |
|-------------------|---|
| Interior Features | ensuite bathroom |
| Appliances | Dishwasher-Built-In, Dryer, Garage Control, Garage Opener, Refrigerator, Stove-Electric, Washer |
| Heating | Forced Air-1, Natural Gas |
| Stories | 2 |
| Has Basement | Yes |
| Basement | Full, Unfinished |

Exterior

| | |
|-------------------|---|
| Exterior | Wood, Vinyl |
| Exterior Features | Fenced, Public Transportation, Schools, Shopping Nearby |
| Roof | Asphalt Shingles |
| Construction | Wood, Vinyl |
| Foundation | Concrete Perimeter |

School Information

| | |
|------------|----------------------------|
| Elementary | CorpusChristi/EllerslieCam |
| Middle | CorpusChristi/EllerslieCam |
| High | HolyTrinity/ElderDrFrancis |

Additional Information

| | |
|----------------|-----------------|
| Date Listed | April 9th, 2025 |
| Days on Market | 10 |
| Zoning | Zone 53 |
| Condo Fee | \$240 |

DATA IS DEEMED RELIABLE BUT IS NOT GUARANTEED ACCURATE BY THE REALTORS® ASSOCIATION OF EDMONTON. COPYRIGHT 2025 BY THE REALTORS® ASSOCIATION OF EDMONTON. ALL RIGHTS RESERVED.Trademarks are owned or controlled by the Canadian Real Estate Association (CREA) and identify real estate professionals who are members of CREA (REALTOR®, REALTORS®) and/or the quality of services they provide (MLS®, Multiple Listing Service®)

Listing information last updated on April 19th, 2025 at 3:47am MDT