

\$429,000 - 16823 98a Avenue, Edmonton

MLS® #E4429300

\$429,000

4 Bedroom, 2.50 Bathroom, 1,327 sqft
Single Family on 0.00 Acres

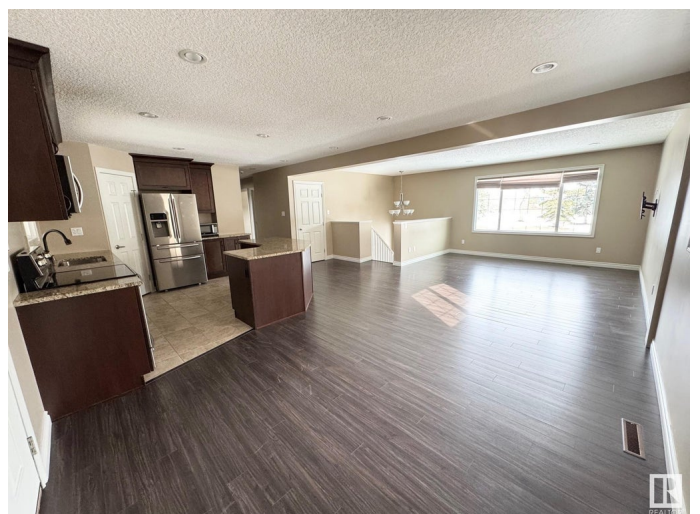
Glenwood (Edmonton), Edmonton, AB

Show Stopper! Fully renovated, Large lot!
Oversized detached garage! Sunroom! Central
Air! This home has it all!. This 1323Sqft bi level
has 4 bedrooms 2.5 baths and is beyond
spotless. With an open Kitchen, Granite
counters, great cabinet space newer
appliances, a walk in pantry you are set to
cook up a storm. The main floor also boasts a
living room, dining room, 3 bedrooms a full
bathroom and a large sunroom. Downstairs
has a large family room with a fireplace, Large
windows which bring in lots of light, a
oversized bedroom with a WIC and ensuite
with jetted tub! this could also be the primary
bedroom. The Laundry room is downstairs as
well as another half bath. The backyard is an
entertainers dream! with tons of space! This
Home sits directly across the street from Jack
Horan Park you will get that view right out your
front window! This home is a must see.

Built in 1969

Essential Information

MLS® #	E4429300
Price	\$429,000
Bedrooms	4
Bathrooms	2.50
Full Baths	2
Half Baths	1



Square Footage	1,327
Acres	0.00
Year Built	1969
Type	Single Family
Sub-Type	Detached Single Family
Style	Bi-Level
Status	Active

Community Information

Address	16823 98a Avenue
Area	Edmonton
Subdivision	Glenwood (Edmonton)
City	Edmonton
County	ALBERTA
Province	AB
Postal Code	T5P 0H2

Amenities

Amenities	Air Conditioner
Parking	Double Garage Detached

Interior

Interior Features	ensuite bathroom
Appliances	Air Conditioning-Central, Dishwasher-Built-In, Dryer, Fan-Ceiling, Garage Control, Garage Opener, Oven-Built-In, Refrigerator, Stove-Countertop Electric, Vacuum Systems, Window Coverings
Heating	Forced Air-1, Natural Gas
Fireplace	Yes
Fireplaces	Corner
Stories	2
Has Basement	Yes
Basement	Full, Finished

Exterior

Exterior	Concrete, Vinyl
Exterior Features	Back Lane, Flat Site, Fruit Trees/Shrubs, Landscaped, Level Land, Low Maintenance Landscape, Paved Lane, Public Transportation, Schools, Shopping Nearby
Roof	Asphalt Shingles

Construction Concrete, Vinyl
Foundation Concrete Perimeter

Additional Information

Date Listed April 5th, 2025
Days on Market 2
Zoning Zone 22

DATA IS DEEMED RELIABLE BUT IS NOT GUARANTEED ACCURATE BY THE REALTORS® ASSOCIATION OF EDMONTON. COPYRIGHT 2025 BY THE REALTORS® ASSOCIATION OF EDMONTON. ALL RIGHTS RESERVED. Trademarks are owned or controlled by the Canadian Real Estate Association (CREA) and identify real estate professionals who are members of CREA (REALTOR®, REALTORS®) and/or the quality of services they provide (MLS®, Multiple Listing Service®)

Listing information last updated on April 7th, 2025 at 8:02am MDT