

\$519,900 - 13412 164 Avenue, Edmonton

MLS® #E4428817

\$519,900

4 Bedroom, 3.50 Bathroom, 1,766 sqft

Single Family on 0.00 Acres

Carlton, Edmonton, AB

Excellent Family home in Carlton. This 1765 sqft, 2 storey home built in 2015 comes with a total of 4 bedrooms, 3.5 bathrooms, a fully finished basement plus a Double Detached Garage. The front entrance opens to a flex room, perfect for a home office, kids play area or living room. The dining nook can easily accommodate family gatherings. The kitchen has a large island, spacious walk in pantry, dark stained cabinetry & tile backsplash. The living room has a large window overlooking the fenced back yard. The 2nd floor has 3 spacious bedrooms, a large Laundry room & a 4pce main bath. The primary bedroom features a walk in closet with custom closet organizers & a 4pce Ensuite w/ separate shower & soaker tub. The Fully Finished Basement has a family room with wet bar, a large bedroom, a 4 pce bathroom plus a second living area perfect for home gym or games room. Well maintained home. Close to schools & shopping plus many more amenities.

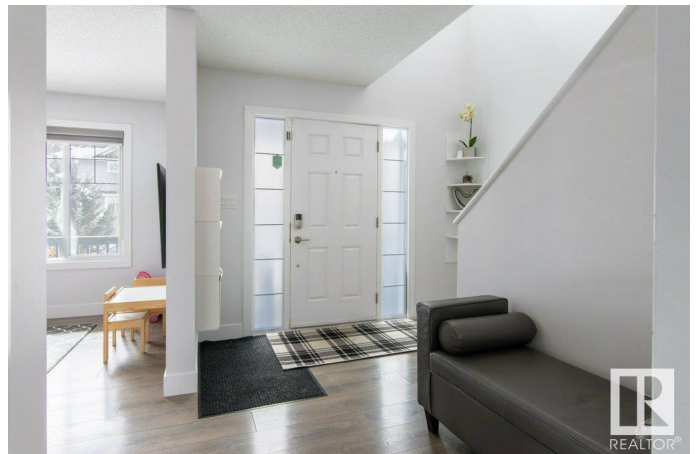
Built in 2015

Essential Information

MLS® # E4428817

Price \$519,900

Bedrooms 4



Bathrooms	3.50
Full Baths	3
Half Baths	1
Square Footage	1,766
Acres	0.00
Year Built	2015
Type	Single Family
Sub-Type	Detached Single Family
Style	2 Storey
Status	Active

Community Information

Address	13412 164 Avenue
Area	Edmonton
Subdivision	Carlton
City	Edmonton
County	ALBERTA
Province	AB
Postal Code	T6V 0G4

Amenities

Amenities	Bar, Deck
Parking	Double Garage Detached

Interior

Interior Features	ensuite bathroom
Appliances	Dishwasher-Built-In, Dryer, Garage Control, Garage Opener, Oven-Microwave, Refrigerator, Stove-Electric, Washer, Window Coverings, Wine/Beverage Cooler, TV Wall Mount
Heating	Forced Air-1, Natural Gas
Stories	3
Has Basement	Yes
Basement	Full, Finished

Exterior

Exterior	Wood, Stone, Vinyl
Exterior Features	Back Lane, Landscaped, Playground Nearby, Public Transportation, Schools, Shopping Nearby
Roof	Asphalt Shingles

Construction	Wood, Stone, Vinyl
Foundation	Concrete Perimeter

Additional Information

Date Listed	April 3rd, 2025
Days on Market	13
Zoning	Zone 27

DATA IS DEEMED RELIABLE BUT IS NOT GUARANTEED ACCURATE BY THE REALTORS® ASSOCIATION OF EDMONTON. COPYRIGHT 2025 BY THE REALTORS® ASSOCIATION OF EDMONTON. ALL RIGHTS RESERVED.Trademarks are owned or controlled by the Canadian Real Estate Association (CREA) and identify real estate professionals who are members of CREA (REALTOR®, REALTORS®) and/or the quality of services they provide (MLS®, Multiple Listing Service®)

Listing information last updated on April 16th, 2025 at 11:47am MDT