

Courtesy Of Peshal K Bastola Of Sterling Real Estate

\$479,900 - 12728 118 Street, Edmonton

MLS® #E4427266

\$479,900

5 Bedroom, 3.50 Bathroom, 1,631 sqft
Single Family on 0.00 Acres

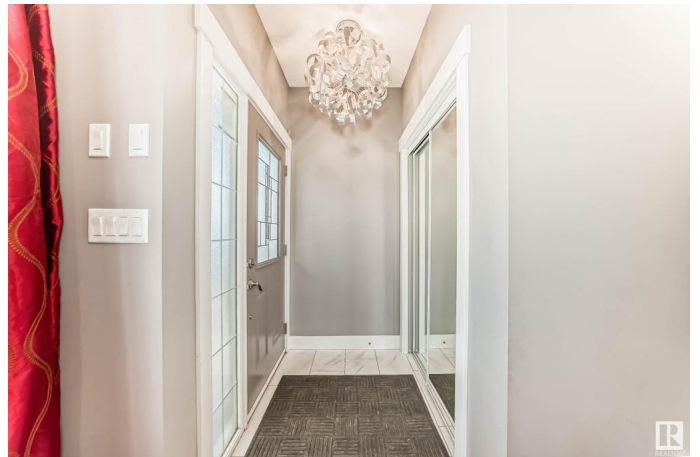
Calder, Edmonton, AB

Welcome to this beautifully designed 2016 built (1631 sqft) infill half duplex with FINISHED BASEMENT and SIDE ENTRY in the community of Calder. Upon entry you are greeted by tile and hardwood flooring, stylish fixtures and pot lights and gas fireplace in open concept spacious living and dining room. The living room also comes with plenty of high end cupboards, spacious pantry and quartz counter top. The living ends with a 2 pcs bath leading to deck. Upstairs, you will find laundry with a sink and built in cupboards, 4 pc bath, storage and three large bedrooms. Master bed is very spacious with walk-in-closet and 4 pc ensuite. Finished basemnt with SIDE ENTRANCE has two big bedrooms, living, dining area and kitchen with cabinets. The backyard has a deck and double detached garage. Close to all amenities; school, shopping, transit etc. Easy access to DOWNTOWN, NAIT, MacWAN UNIVERSITY. This is perfect for investor or first time buyer. GOOD LUCK!

Built in 2015

Essential Information

MLS® #	E4427266
Price	\$479,900
Bedrooms	5
Bathrooms	3.50



Full Baths	3
Half Baths	1
Square Footage	1,631
Acres	0.00
Year Built	2015
Type	Single Family
Sub-Type	Half Duplex
Style	2 Storey
Status	Active

Community Information

Address	12728 118 Street
Area	Edmonton
Subdivision	Calder
City	Edmonton
County	ALBERTA
Province	AB
Postal Code	T5E 5K8

Amenities

Amenities	Deck, Detectors Smoke
Parking	Double Garage Detached

Interior

Interior Features	ensuite bathroom
Appliances	Dishwasher-Built-In, Dryer, Garage Control, Garage Opener, Oven-Microwave, Washer, Refrigerators-Two, Stoves-Two
Heating	Forced Air-1, Natural Gas
Stories	3
Has Basement	Yes
Basement	Full, Finished

Exterior

Exterior	Wood, Vinyl
Exterior Features	Playground Nearby, Public Transportation, Schools, Shopping Nearby, See Remarks
Roof	Asphalt Shingles
Construction	Wood, Vinyl
Foundation	Concrete Perimeter

Additional Information

Date Listed March 24th, 2025

Days on Market 22

Zoning Zone 01

DATA IS DEEMED RELIABLE BUT IS NOT GUARANTEED ACCURATE BY THE REALTORS® ASSOCIATION OF EDMONTON. COPYRIGHT 2025 BY THE REALTORS® ASSOCIATION OF EDMONTON. ALL RIGHTS RESERVED. Trademarks are owned or controlled by the Canadian Real Estate Association (CREA) and identify real estate professionals who are members of CREA (REALTOR®, REALTORS®) and/or the quality of services they provide (MLS®, Multiple Listing Service®)

Listing information last updated on April 15th, 2025 at 9:02pm MDT