

# \$899,900 - 4278 Chichak Close, Edmonton

MLS® #E4424070

**\$899,900**

6 Bedroom, 5.00 Bathroom, 2,913 sqft

Single Family on 0.00 Acres

Chappelle Area, Edmonton, AB

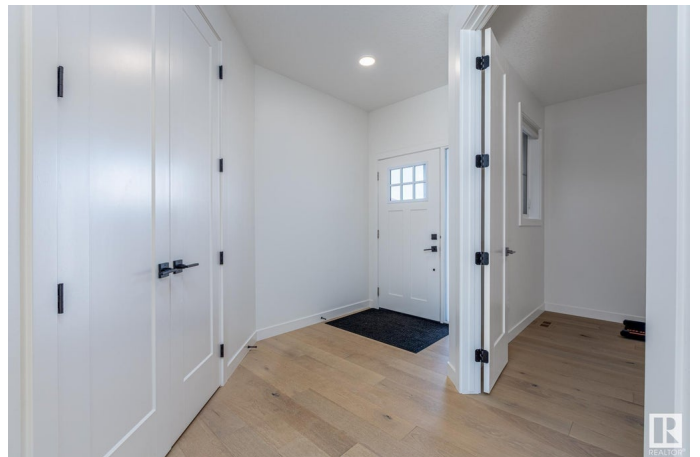
Your dream home in Chappelle awaits. This stunning six-bedroom five-bathroom two-storey home is designed for convenience, income potential & multigenerational living. Backing onto Don Getty K-9 School you can watch your kids walk to class from your backyard. The bright open-concept main floor features a chef's kitchen with elevated white cabinets, quartz countertops, an oversized island w/ a butler's pantry with rough-in for a gas cooktop—ideal for high-heat cooking. A main-floor den can serve as a bedroom with a full bath nearby, perfect for extended family or guests. Upstairs the primary suite offers a spa-like ensuite with dual sinks, a freestanding tub & walk-in closet. A bonus room and massive laundry complete this level. The legal two-bedroom basement suite with a private entrance full kitchen & separate laundry is perfect for rental income or multigenerational living. Fully fenced landscaped featuring a spacious deck this home includes access to Chappelle Gardens rec center & backs onto the school.

Built in 2021

## Essential Information

MLS® # E4424070

Price \$899,900



|                |                        |
|----------------|------------------------|
| Bedrooms       | 6                      |
| Bathrooms      | 5.00                   |
| Full Baths     | 5                      |
| Square Footage | 2,913                  |
| Acres          | 0.00                   |
| Year Built     | 2021                   |
| Type           | Single Family          |
| Sub-Type       | Detached Single Family |
| Style          | 2 Storey               |
| Status         | Active                 |

### **Community Information**

|             |                    |
|-------------|--------------------|
| Address     | 4278 Chichak Close |
| Area        | Edmonton           |
| Subdivision | Chappelle Area     |
| City        | Edmonton           |
| County      | ALBERTA            |
| Province    | AB                 |
| Postal Code | T6W 4B4            |

### **Amenities**

|                |                                                    |
|----------------|----------------------------------------------------|
| Amenities      | Air Conditioner, Ceiling 10 ft., Closet Organizers |
| Parking Spaces | 1                                                  |
| Parking        | Double Garage Attached, Insulated                  |

### **Interior**

|                   |                                                                                                                                                                                           |
|-------------------|-------------------------------------------------------------------------------------------------------------------------------------------------------------------------------------------|
| Interior Features | ensuite bathroom                                                                                                                                                                          |
| Appliances        | Dishwasher-Built-In, Garage Control, Garage Opener, Hood Fan, Microwave Hood Fan, Oven-Built-In, Oven-Microwave, Stove-Countertop Gas, Window Coverings, Refrigerators-Two, TV Wall Mount |
| Heating           | Forced Air-2, Natural Gas                                                                                                                                                                 |
| Fireplace         | Yes                                                                                                                                                                                       |
| Fireplaces        | Insert, Wall Mount                                                                                                                                                                        |
| Stories           | 3                                                                                                                                                                                         |
| Has Basement      | Yes                                                                                                                                                                                       |
| Basement          | Full, Finished                                                                                                                                                                            |

### **Exterior**

|                   |                                            |
|-------------------|--------------------------------------------|
| Exterior          | Wood, Stone, Vinyl                         |
| Exterior Features | Backs Onto Park/Trees, Landscaped, Schools |
| Roof              | Asphalt Shingles                           |
| Construction      | Wood, Stone, Vinyl                         |
| Foundation        | Concrete Perimeter                         |

### **School Information**

|            |                          |
|------------|--------------------------|
| Elementary | Donald R. Getty School   |
| Middle     | Donald R. Getty School   |
| High       | Dr. Anne Anderson School |

### **Additional Information**

|                |                 |
|----------------|-----------------|
| Date Listed    | March 5th, 2025 |
| Days on Market | 44              |
| Zoning         | Zone 55         |
| HOA Fees       | 447.3           |
| HOA Fees Freq. | Annually        |

DATA IS DEEMED RELIABLE BUT IS NOT GUARANTEED ACCURATE BY THE REALTORS® ASSOCIATION OF EDMONTON. COPYRIGHT 2025 BY THE REALTORS® ASSOCIATION OF EDMONTON. ALL RIGHTS RESERVED. Trademarks are owned or controlled by the Canadian Real Estate Association (CREA) and identify real estate professionals who are members of CREA (REALTOR®, REALTORS®) and/or the quality of services they provide (MLS®, Multiple Listing Service®)

Listing information last updated on April 18th, 2025 at 5:02am MDT