

Courtesy Of Jeff D Jackson Of Bode

# \$624,400 - 415 28 Street, Edmonton

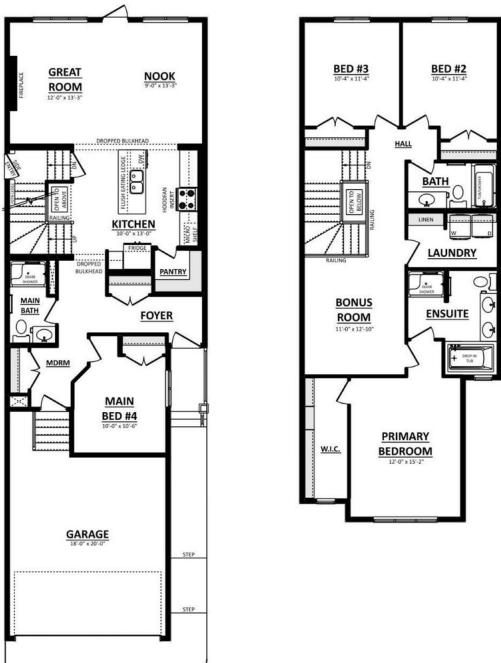
MLS® #E4421480

## \$624,400

4 Bedroom, 3.00 Bathroom, 2,100 sqft  
Single Family on 0.00 Acres

Alces, Edmonton, AB

This Durnin model offers 2,029 sq. ft. of thoughtfully designed living space, blending style & practicality for today’s modern families. At its heart, a centrally located kitchen with a flush eating bar provides the perfect gathering space, while the adjacent spice kitchen adds extra convenience for meal prep & entertaining. With a fourth bedroom & full bathroom on the main level, this home is ideal for multi-generational living or accommodating guests with ease. Expansive windows throughout allow natural light to pour in, creating a bright & welcoming atmosphere. Upstairs, a spacious bonus room offers endless possibilities, while the second-floor laundry room ensures effortless household chores. The primary suite is a true retreat, featuring a generous walk-in closet & a spa-inspired ensuite with double sinks, a drop-in tub, & a separate shower. Designed with both comfort & function in mind, the Durnin is the perfect blend of elegance & practicality. Photos are representative.



Built in 2025

## Essential Information

MLS® #	E4421480
Price	\$624,400
Bedrooms	4

Bathrooms	3.00
Full Baths	3
Square Footage	2,100
Acres	0.00
Year Built	2025
Type	Single Family
Sub-Type	Detached Single Family
Style	2 Storey
Status	Active

### **Community Information**

Address	415 28 Street
Area	Edmonton
Subdivision	Alces
City	Edmonton
County	ALBERTA
Province	AB
Postal Code	T6X 1A7

### **Amenities**

Amenities	No Animal Home, No Smoking Home
Parking Spaces	4
Parking	Double Garage Attached

### **Interior**

Interior Features	ensuite bathroom
Appliances	None
Heating	Forced Air-1, Natural Gas
Fireplace	Yes
Fireplaces	None
Stories	2
Has Basement	Yes
Basement	Full, Unfinished

### **Exterior**

Exterior	Wood, Stone, Vinyl
Exterior Features	Park/Reserve, Playground Nearby, Schools, Shopping Nearby
Roof	Asphalt Shingles
Construction	Wood, Stone, Vinyl

Foundation                      Concrete Perimeter

**Additional Information**

Date Listed                      February 13th, 2025  
Days on Market                65  
Zoning                              Zone 53



DATA IS DEEMED RELIABLE BUT IS NOT GUARANTEED ACCURATE BY THE REALTORS® ASSOCIATION OF EDMONTON. COPYRIGHT 2025 BY THE REALTORS® ASSOCIATION OF EDMONTON. ALL RIGHTS RESERVED.Trademarks are owned or controlled by the Canadian Real Estate Association (CREA) and identify real estate professionals who are members of CREA (REALTOR®, REALTORS®) and/or the quality of services they provide (MLS®, Multiple Listing Service®)  
Listing information last updated on April 19th, 2025 at 2:17pm MDT